



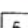



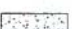


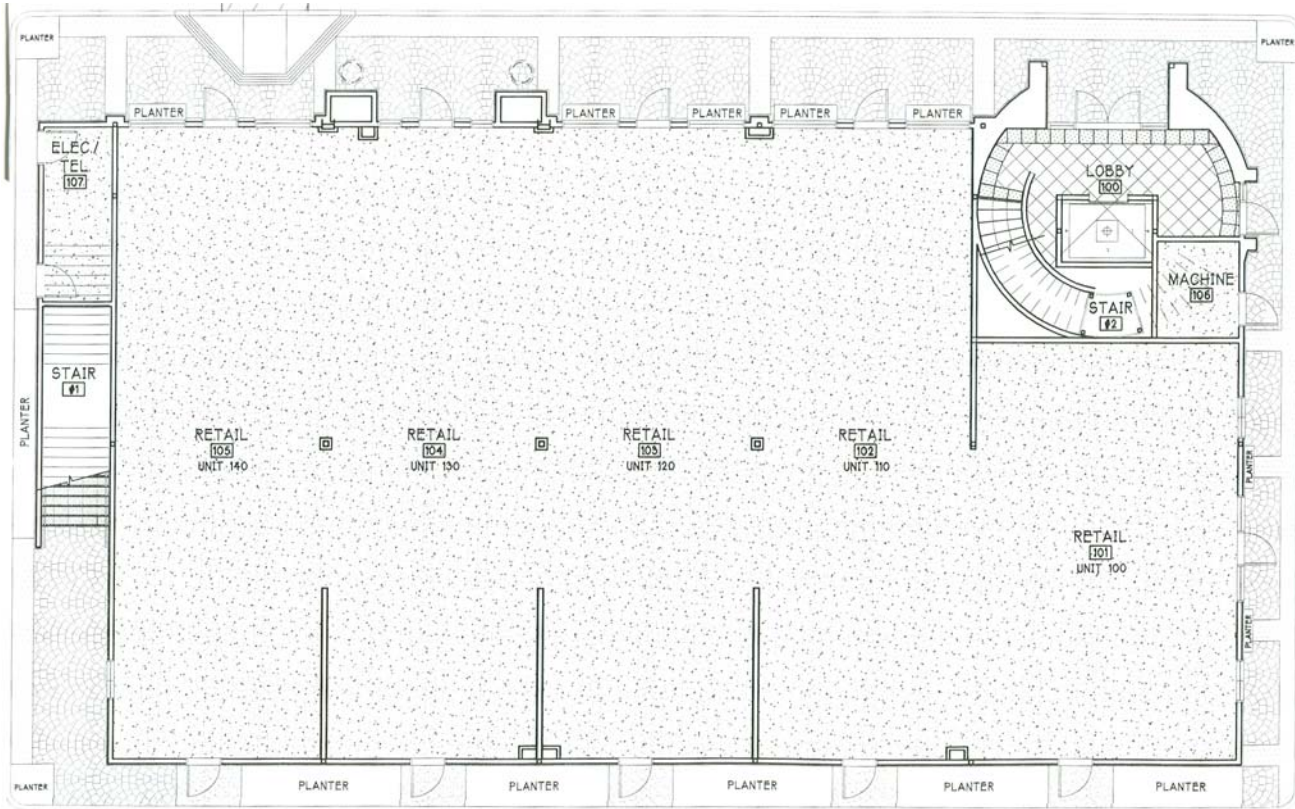


LEGEND:

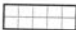
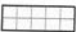


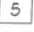



-  = CERAMIC TILE, CT-1
-  = CERAMIC TILE, CT-2
-  = CERAMIC TILE, CT-3
-  = CERAMIC TILE, CT-4
-  = CERAMIC TILE, CT-5
-  = CARPET
-  = VCT
-  = DARK GREY EPOXY OVER BLACK CONCRETE
-  = DUST PROOF CONCRETE
-  = BROOM FIN. NATURAL CONC.
-  = INTREGAL COLORED FAN COMB PATTERNED CONC.

BUILDING "A" FLOOR PLAN

C O M B S + M I G U E L



LEGEND:

-  = CERAMIC TILE, CT-1
-  = CERAMIC TILE, CT-2
-  = CERAMIC TILE, CT-3
-  = CERAMIC TILE, CT-4
-  = CERAMIC TILE, CT-5
-  = DUST PROOF CONCRETE
-  = BROOM FIN. NATURAL CONC.
-  = INTEGRAL COLORED FAN COMB PATTERNED CONC.

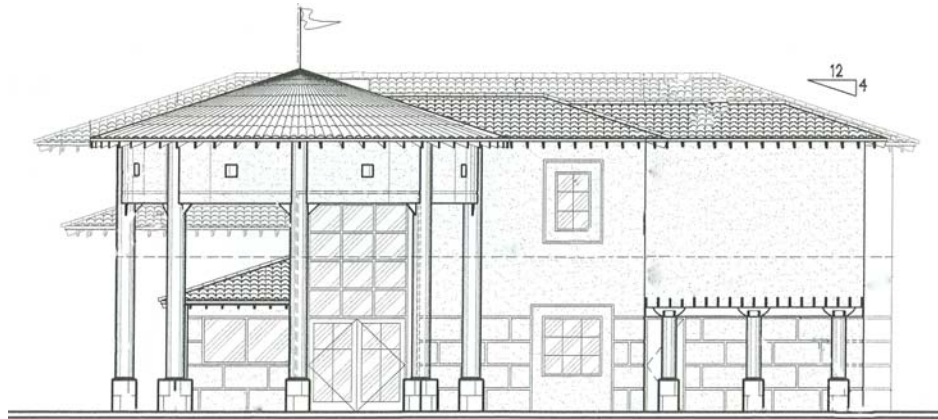
NOTE:

- 1) CERAMIC TILE JOINTS @ BASE TO MATCH JOINTS @ FLOOR.
- 2) SEE FINISH SCHEDULE FOR ALL FLOOR FINISHES.

BUILDING "B" FLOOR PLAN



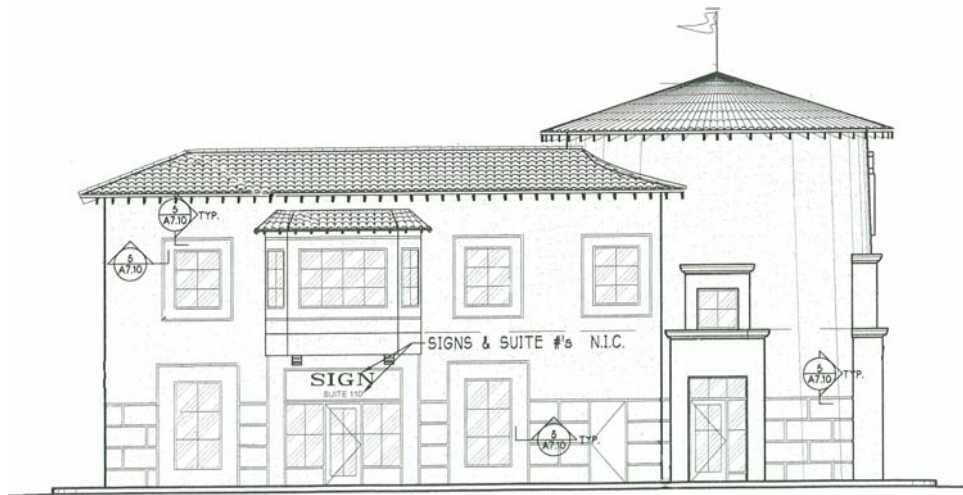
BUILDING "A" EAST ELEVATION



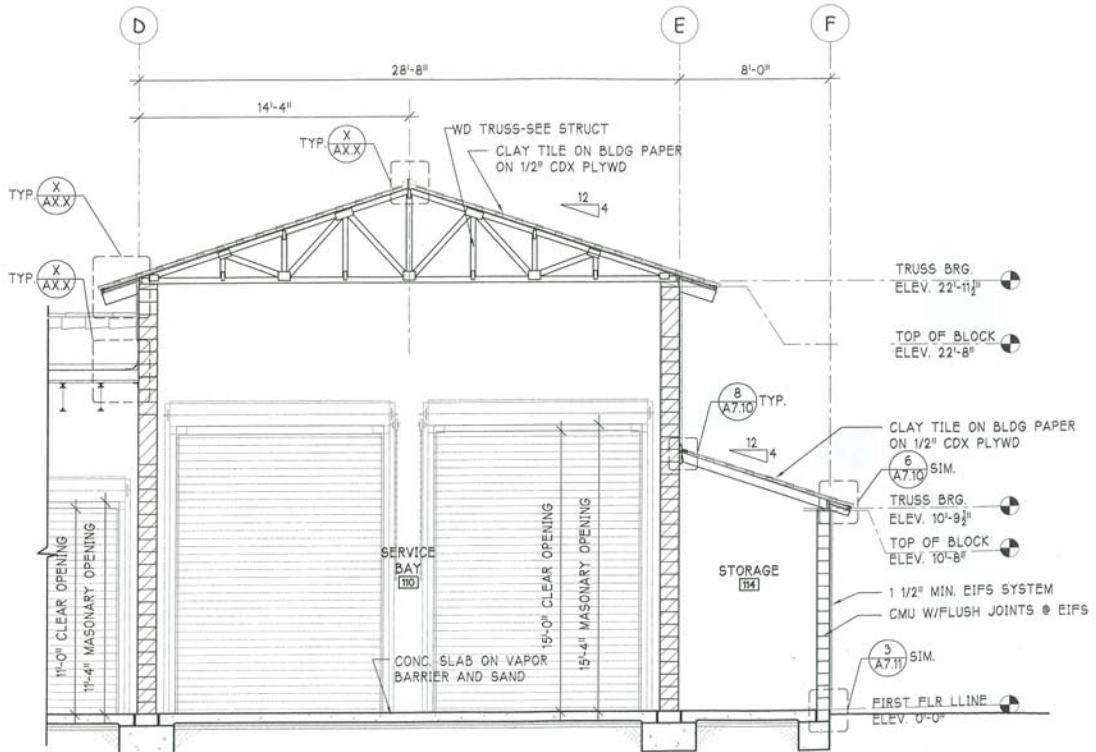
NORTH ELEVATION



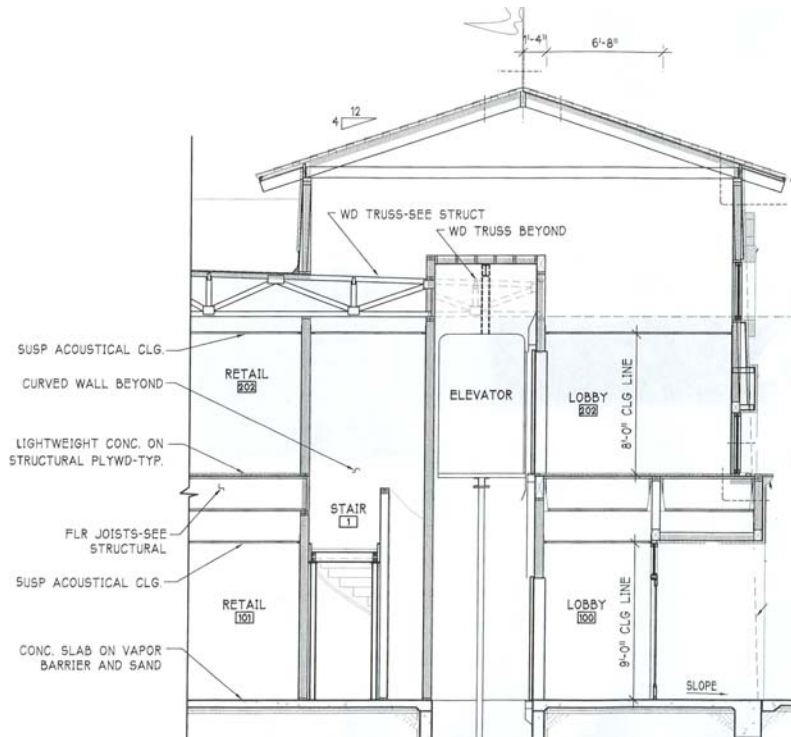
BUILDING "B" EAST ELEVATION



BUILDING "B" SOUTH ELEVATION



BUILDING "A" SECTION



BUILDING "B" SECTION