

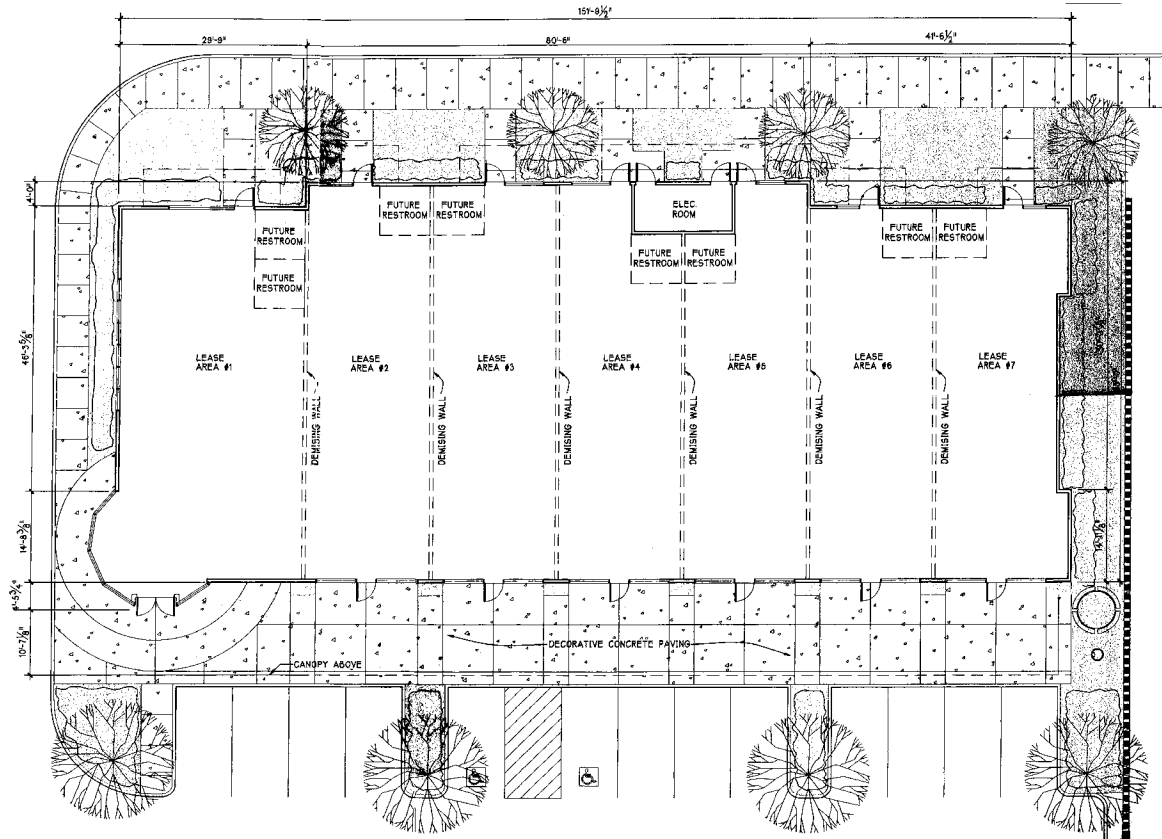


GOLDEN TRIANGLE RETAIL CENTER

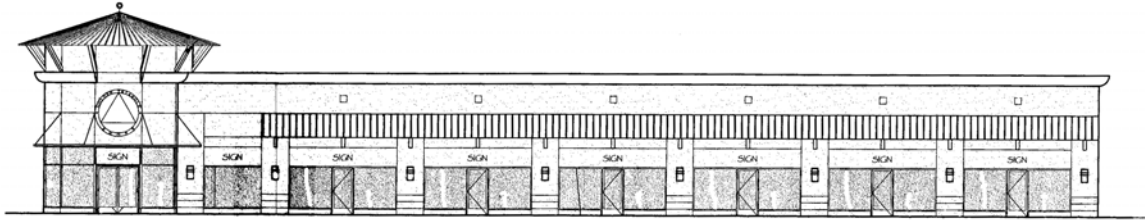
A new shopping center located on Golden Triangle Road, this building will offer seven new retail spaces for shopping opportunities. 10,000 square feet overall, this building will provide customers with comfortable spaces to browse and shop. A circular

tower situated on the corner near the primary driveway provides the building with visual appeal while also creating an obvious entrance area. Curved awnings are a nice accent to the building and cover the walkways, creating shade for patrons.

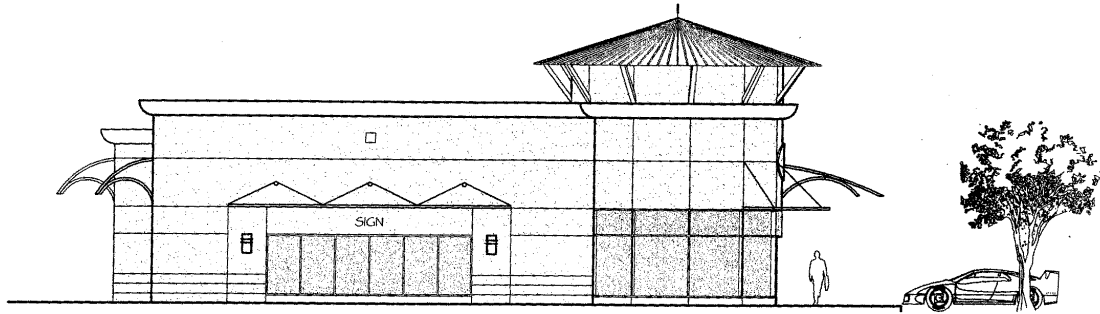




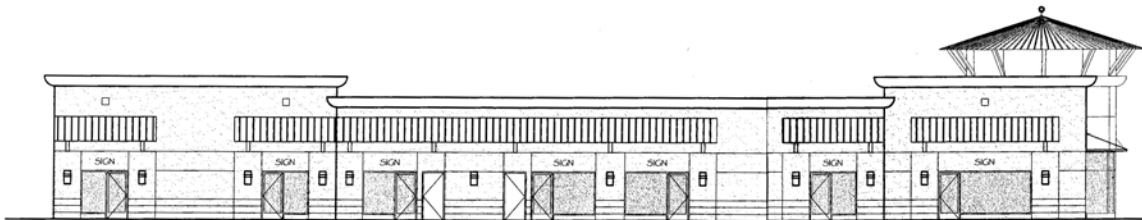
FLOOR PLAN



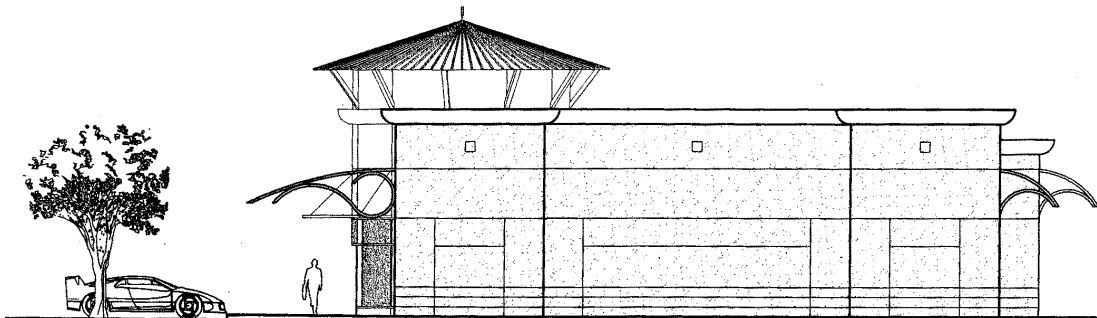
SOUTH ELEVATION



WEST ELEVATION



NORTH ELEVATION



EAST ELEVATION