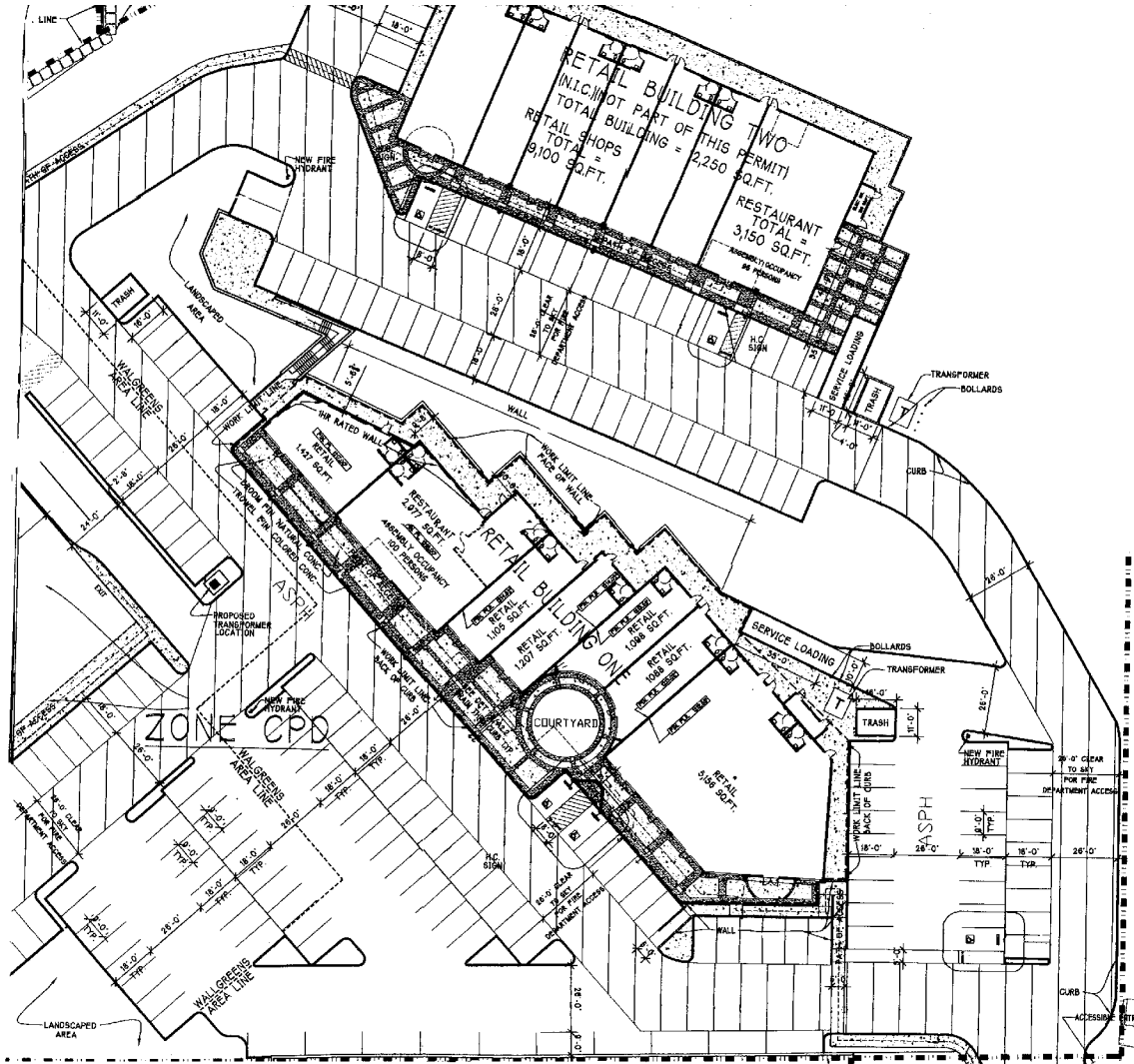


CASTAIC RETAIL CENTER

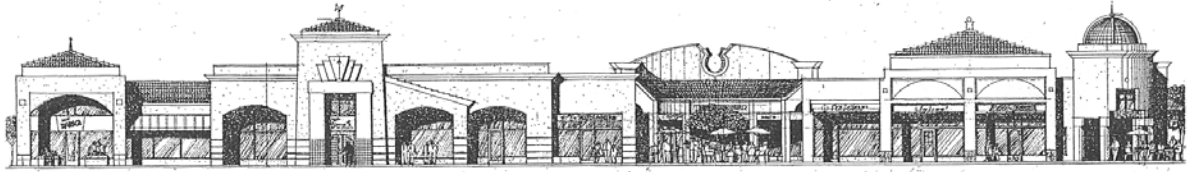
A geometrically conscious new shopping center adds to the color of Castaic with over 20,000 square feet total in retail space and two new restaurants. Ample parking space indicates Castaic Retail Center is sure to serve Castaic's growing population. The design of the main building attracts the eye and promotes a comfortable environment perfect for meeting, sitting, and enjoying the spaces inside and out.

Playing off the shape of the circle, the eastern wing of this center is addressed with a tower topped with a dome that will be visual from the 5 Freeway. To embrace the sunny southern façade, an inverted circular plaza gives patrons a place to sit, talk, window shop, and take pleasure in the outdoors. The covered walkways are arched in the center, maintaining the circular theme in this appealing shopping center.





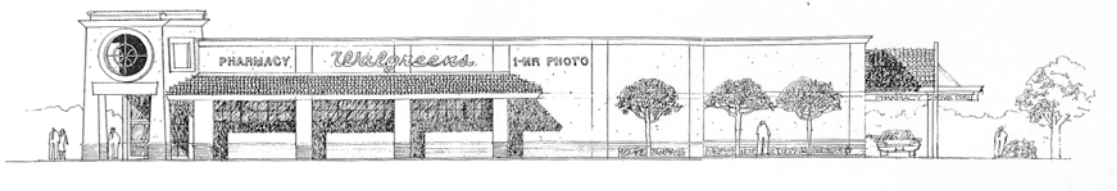
SITE PLAN



SOUTH ELEVATION OF BUILDING A



SOUTH ELEVATION OF BUILDING B



WEST ELEVATION OF WALGREENS