



**“Residents feel that outside of the Downtown Core District, quality materials and good design are more important than themed architecture.”**

— Santa Clarita Architectural Design Guidelines

## BARBAKOW BUILDING

**B**uilt on top of a hill overlooking the beautiful Santa Clarita Valley, this 20,000 square foot office building embraces its environmental site. The two-story building, designed in association with Berliner and Associates, wraps around a grove of Heritage Oak Trees that were on the site, and windows

called “vision strips” give panoramic views of the outdoors. The building is built up over an open-air underground parking center, which helps optimize and utilize the space on the site. Dr. Alan Barbakow is developing this site for use by the Child and Family Center.

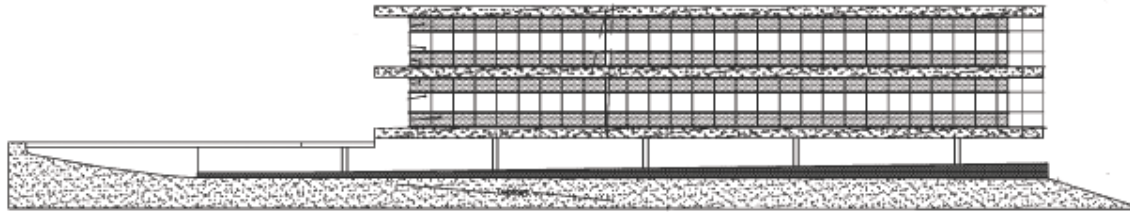




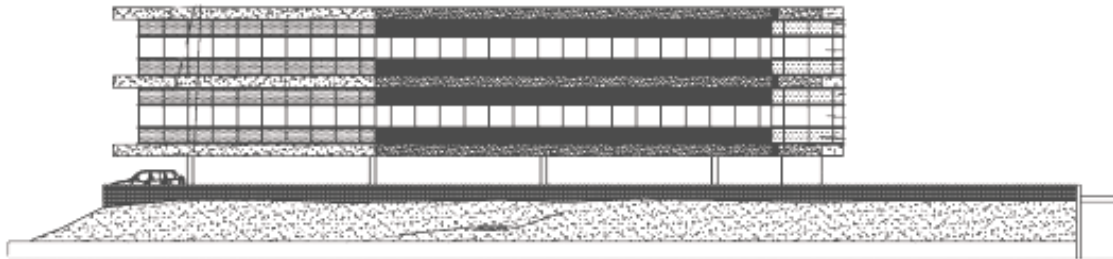
SITE PLAN



SOUTH ELEVATION



EAST ELEVATION



NORTH ELEVATION



WEST ELEVATION

