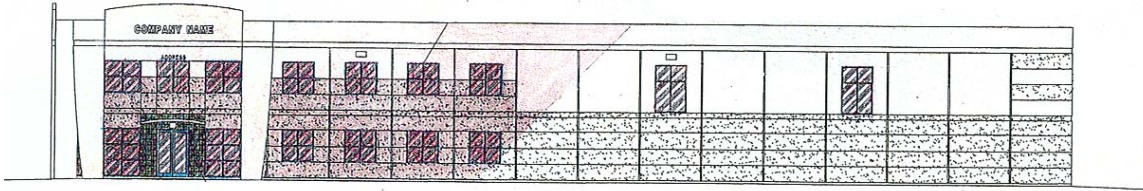


## CENTRE POINTE BUSINESS PARK

Since its establishment more than a decade ago, Combs + Miguel can account for an extensive resume of architectural undertakings in the Santa Clarita Valley and elsewhere. At the top of the list is a simultaneous series of four buildings located on a 240-acre area that the firm designed for its developers, the Santa Clarita Business Park Company. The first two featured buildings boast striking portals upon entry to the 37,000 square foot and 33,000 square foot property sections. The “tilt up” concrete panel construction forms a strong visual focus on both buildings. Posing as the

main theme and organization for the whole of the property, horizontal bonding and end quoins provide the exteriors with sophisticated appearances while maintaining the demands of the economic and functional requirements of the marketplace. A “zero lot line” runs between the third and fourth of these featured properties. Again, the strong horizontal banding demonstrates the two buildings visually organizing elements and relates them to the first two structures. Accenting the office entrances of each edifice, corner steps promote constant optical interest.

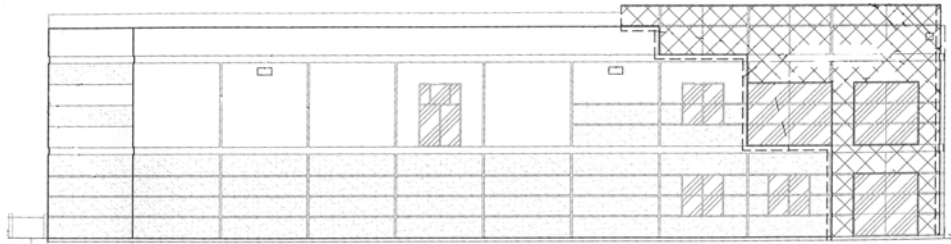




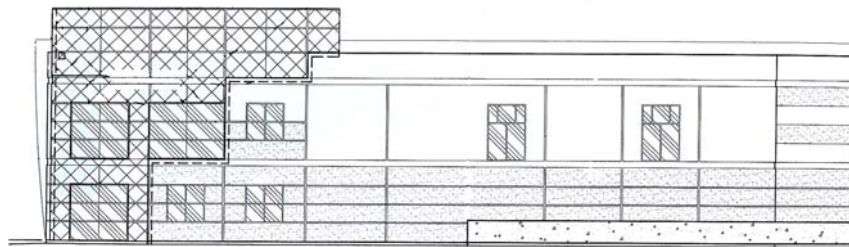
LOT # 2 SOUTH ELEVATION



LOT # 3 SOUTH ELEVATION



LOT # 7 EAST ELEVATION



LOT # 8 WEST ELEVATION