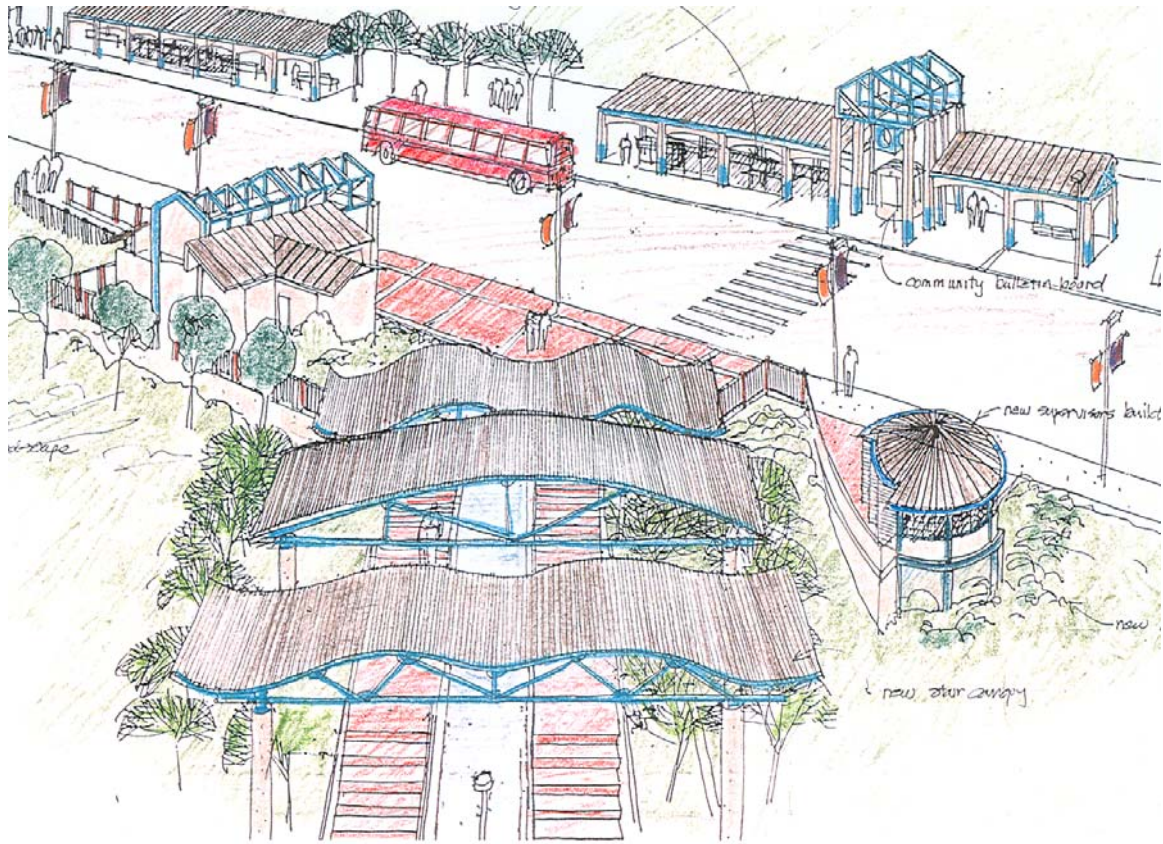


Santa Clarita METROLINK STATION

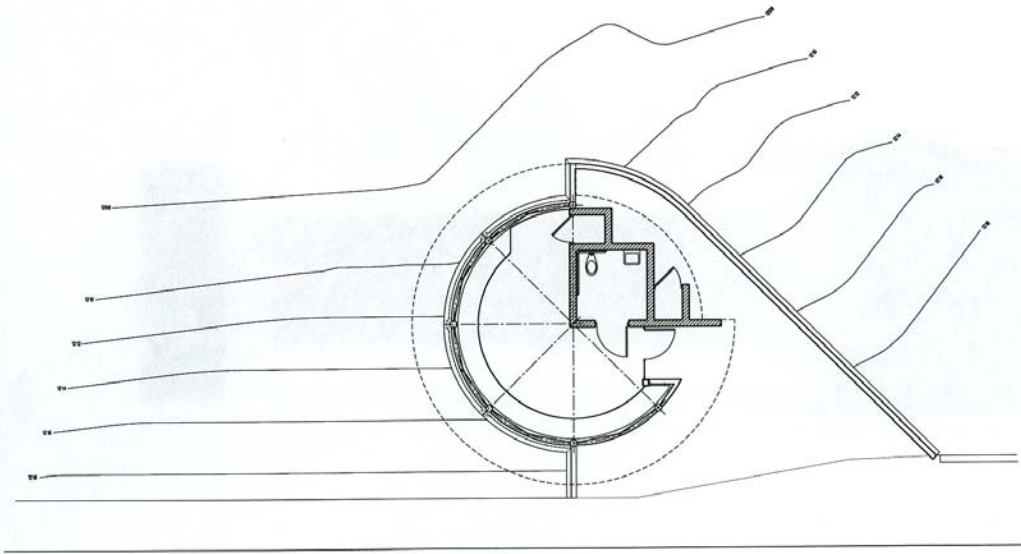
Services for the City of Santa Clarita's Soledad Canyon Road station involved the design of a security and bus supervisor's office structure. Also included are design upgrades to the present canopy and platform areas to provide shelter from winds and rain through the use of canopy extensions and patterned glass screens.

Landscaping, colorful painted areas and banners provide a lively passenger-oriented atmosphere to the station. Design work was coordinated with artist Vicki McCaslin who provided Native American design motifs and a water feature to the station under a grant for artwork in Metro link Stations.

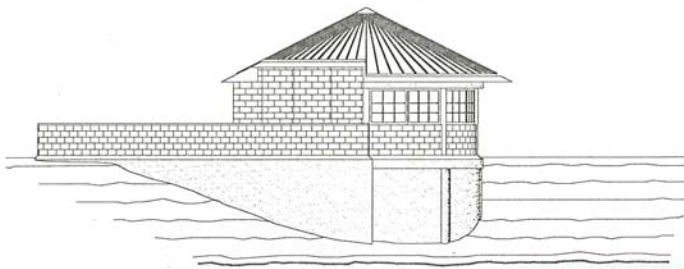




The canopy structures play a dynamic role in the shaping of this space. Curved, rippled, and slanted roofs are juxtaposed to create a “moving” station. When combined with the water features and colorful artwork, this station becomes alive and very commuter friendly.



SUPERVISOR'S BUILDING FLOOR PLAN



NORTH ELEVATION



VIEW LOOKING NORTHWEST

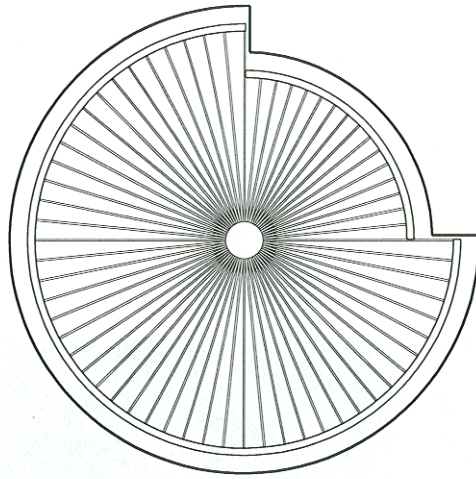


SOUTH ELEVATION

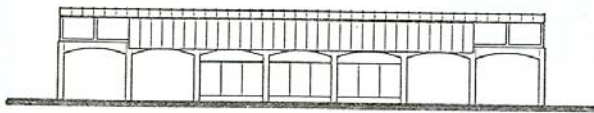


SECTION

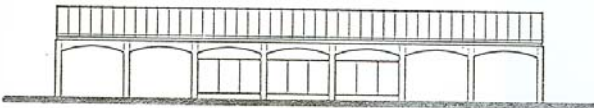
SUPERVISOR'S BUILDING ELEVATIONS AND SECTION



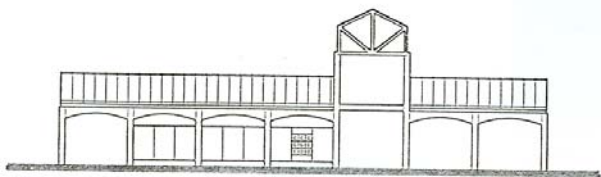
SUPERVISOR'S BUILDING ROOF PLAN



SOUTH ELEVATION - TYPICAL CANOPY



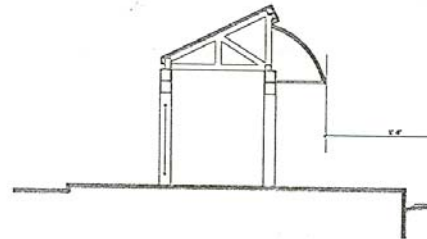
NORTH ELEVATION - TYPICAL CANOPY



NORTH ELEVATION - TOWER CANOPY



VIEW LOOKING EAST



SECTION THROUGH TOWER CANOPY

UPGRADED CANOPY ELEVATIONS, PERSPECTIVE, AND SECTION

C O M B S + M I G U E L

