



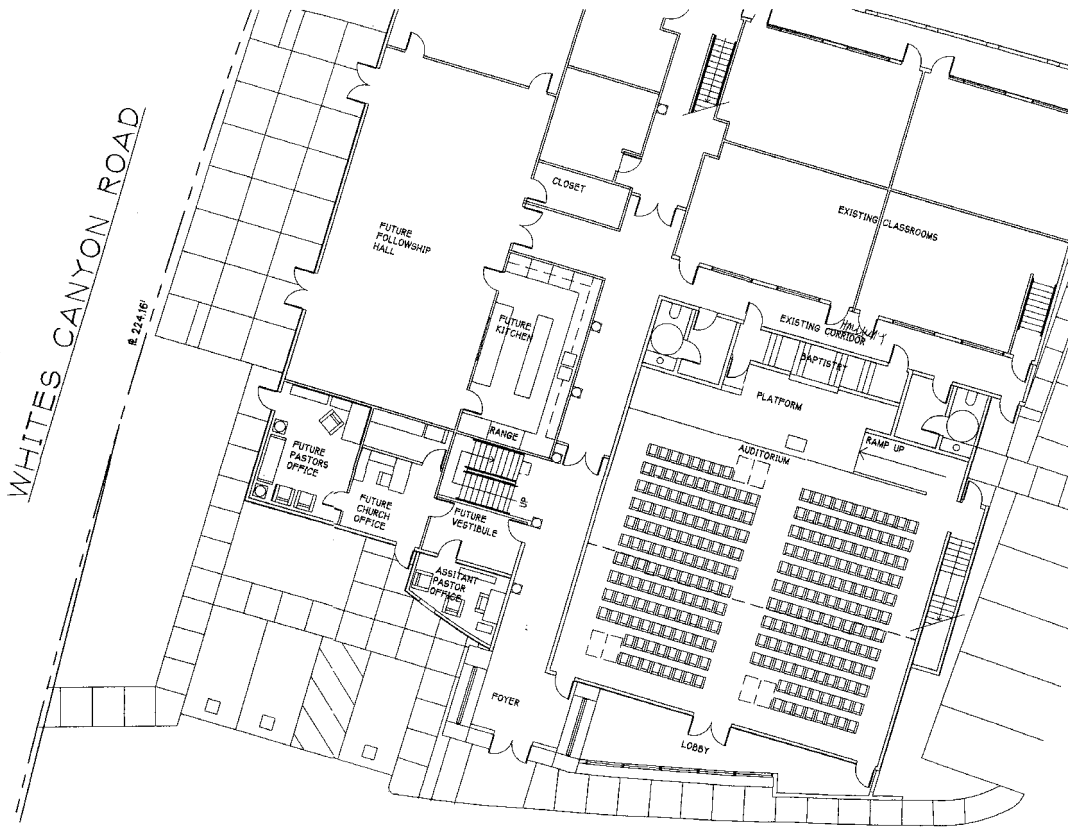
## NORTH OAKS CHURCH OF CHRIST

A sanctuary addition for an existing church needing to expand is being designed to enliven its facility environment. The sanctuary space will now seat 365 people on the first floor and a new balcony. The existing sanctuary space will be converted into a fellowship hall and new church offices will be provided. The design is based on an Arts and Crafts Mission Style incorporating design features of the

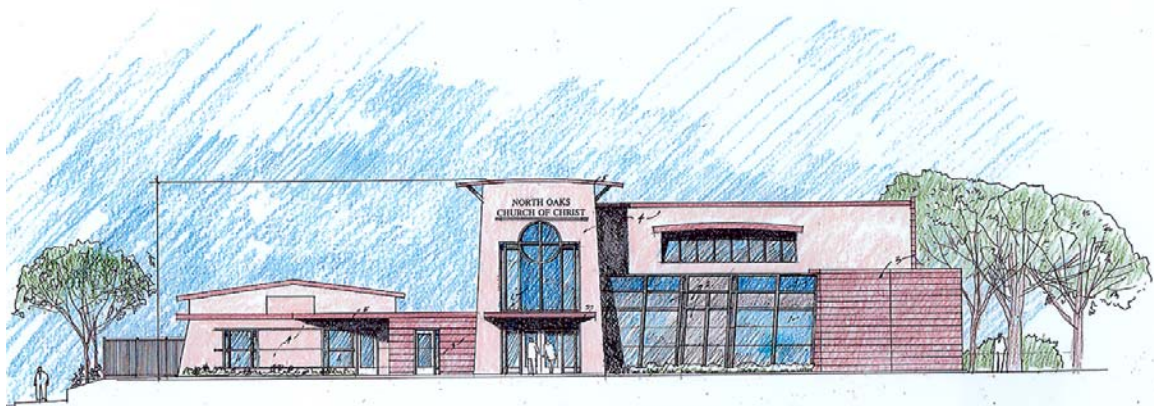
existing building. The sanctuary tower forms a new focus for the church community and will make the church more readily visible from the street entrance.



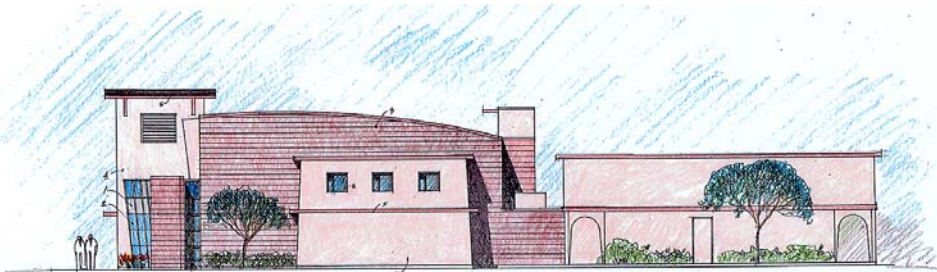




FLOOR PLAN



SOUTH ELEVATION



EAST ELEVATION



NORTH ELEVATION



WEST ELEVATION