



## MOORPARK AUDITORIUM Renovation

**A** 10,500 square foot auditorium, built in 1938 as a part of the old Moorpark High School. The auditorium was restored for use as a community theater and serves as a performing arts building for the new Walnut Canyon Elementary School. Exterior design enhancements include newly designed

north and south facades incorporating Art Deco motifs to enhance the existing exterior design. The project was designed and constructed in two phases to accommodate budget requirements. The exterior renovation and upgrades were in the first phase. Interior renovations were in the second phase.



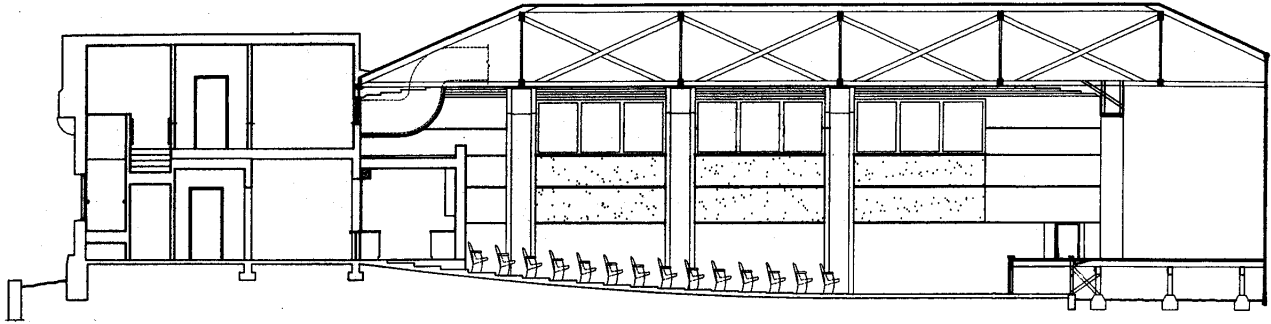


C O M B S + M I G U E L

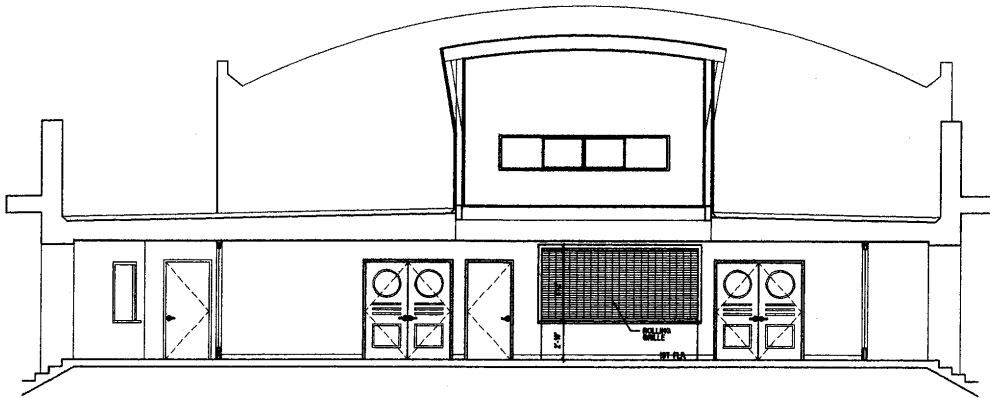


C O M B S + M I G U E L





WEST INTERIOR ELEVATION (EAST ELEVATION SIMILAR)



NORTH INTERIOR ELEVATION